



*Distance Education Report*  
**2006-2007**

prepared by the  
**Office of Distance Education**  
200 Discovery Drive, Suite 101 • College Station, TX • 77843-1478  
(979) 845-4282  
October 10, 2007

The following pages offer a snapshot of distance education activity at Texas A&M University during the 2006-2007 academic year. This information was collected by the Office of Distance Education from SIMS after the 12th class day. The parameters of this report are limited to course sections that were billed through FAMIS as distance education. During this period, Texas A&M enjoyed 3,701 enrollments in distance education classes from 1,456 unique students.

“Distance Education” is defined by the Texas Higher Education Coordinating Board (THECB) as courses offered by interactive video, face-to-face, web-based or a combination of these delivery systems in which more than 50% of learning takes place with the instruction and student being at different locations. For the most part at Texas A&M, web-based courses intended for on-campus students—even sections offered 100% on the web—are not billed at distance education rates and thus are not included in this tally.

### **Methodology**

The reports generated by the Office of Distance Education have become incrementally more sophisticated over the last year, and this report is no exception. For the first time, ODE was able to calculate relative residency status based on registrations of in-state versus out-of-state sections. These reports begin on page 14. Colleges that did not enroll out-of-state students are reported in the summary but are excluded from the departmental breakdown.

In this document, reports of SCHs include enrollments by both in-state and out-of-state students, whereas Weighted SCHs (WSCHs) only include enrollments by in-state students since only those may be reported for state subvention.

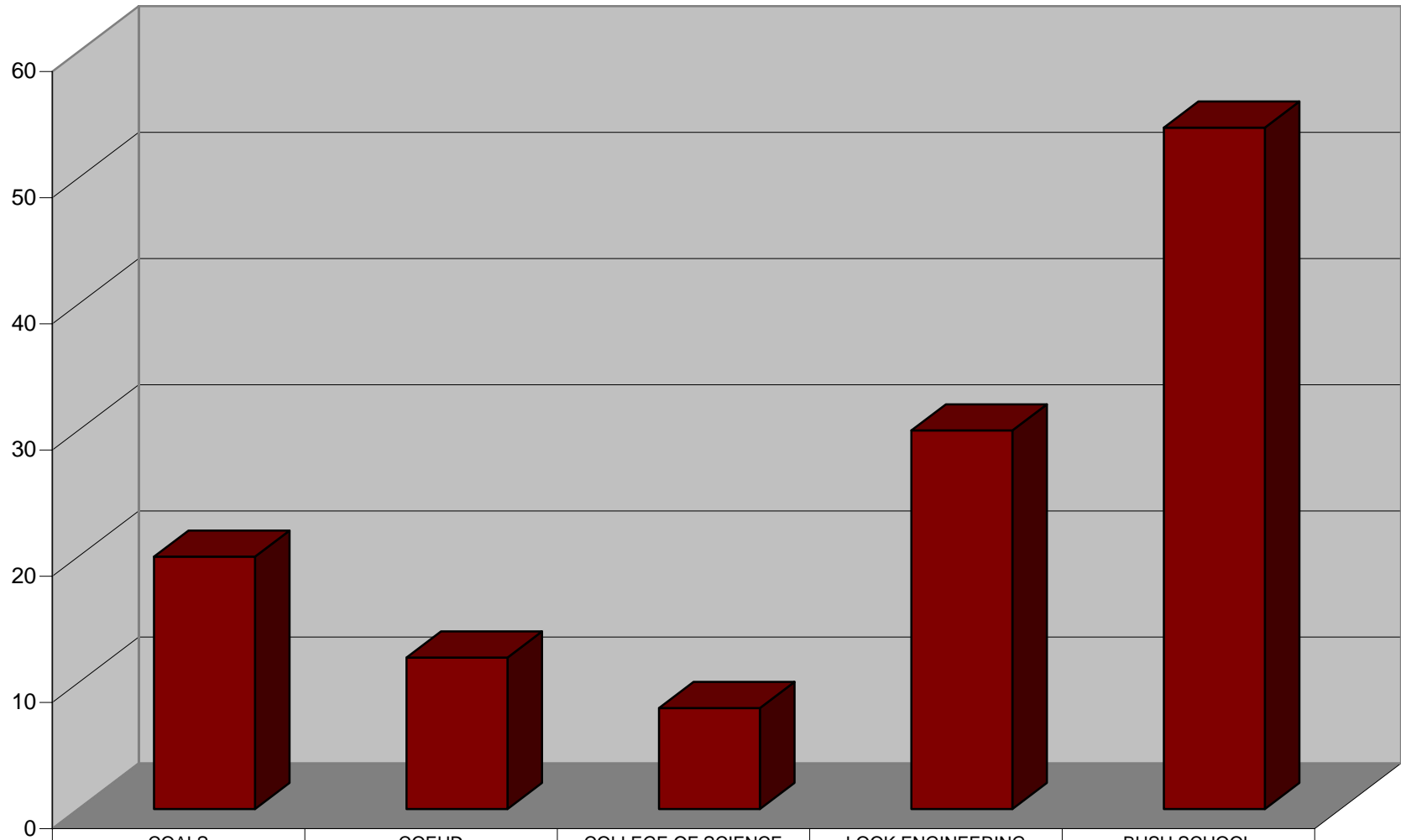
The chart of DE program graduations originates from data self-reported by colleges.

The Mays Business School does not offer online degrees, but the Executive MBA, taught face-to-face off-campus, falls within the THECB’s definition of distance education and thus is charged the distance education fee. Detail reports for the Bush School and Geosciences are not included because in each case only a single department is listed (Bush and Oceanography, respectively).

If you would like additional interpretation or information for your department, please contact Preston DuBose at the Office of Distance Education.

The Texas A&M University  
Office of Distance Education  
200 Discovery Drive, Suite 101  
College Station, TX 77843-1478  
(979) 845-4282

**Texas A&M DE Program Student Graduations**  
Fall 2006 through Summer 2007



■ Graduations

COALS

20

COEHD

12

COLLEGE OF SCIENCE

8

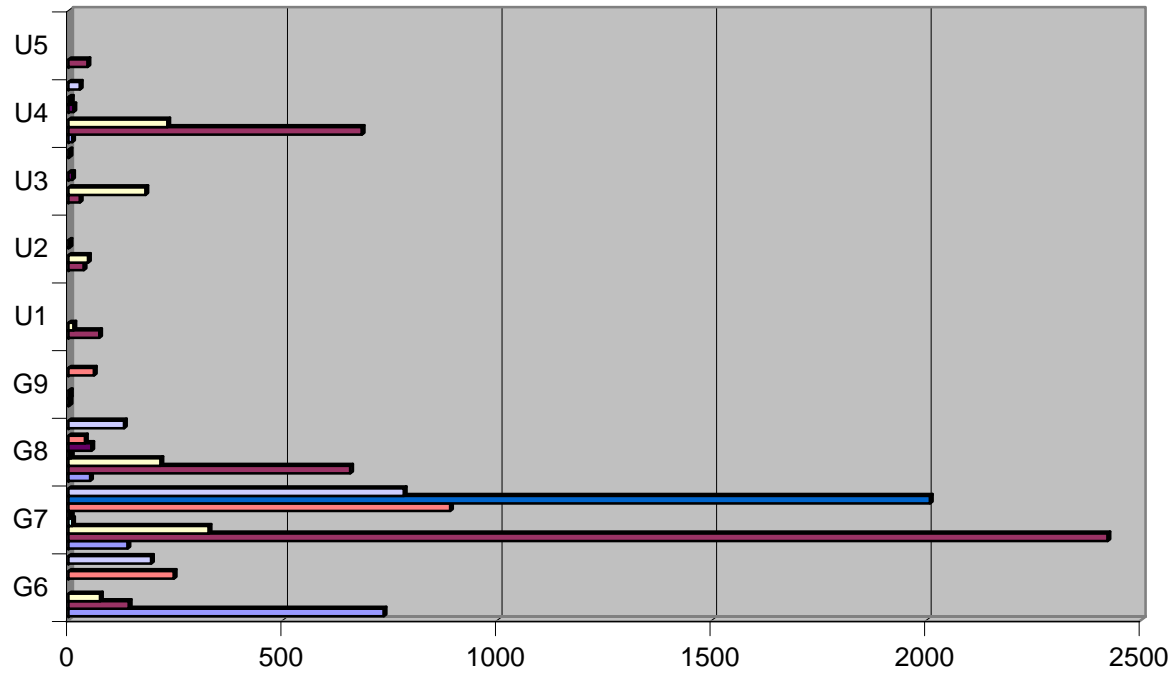
LOOK ENGINEERING

30

BUSH SCHOOL

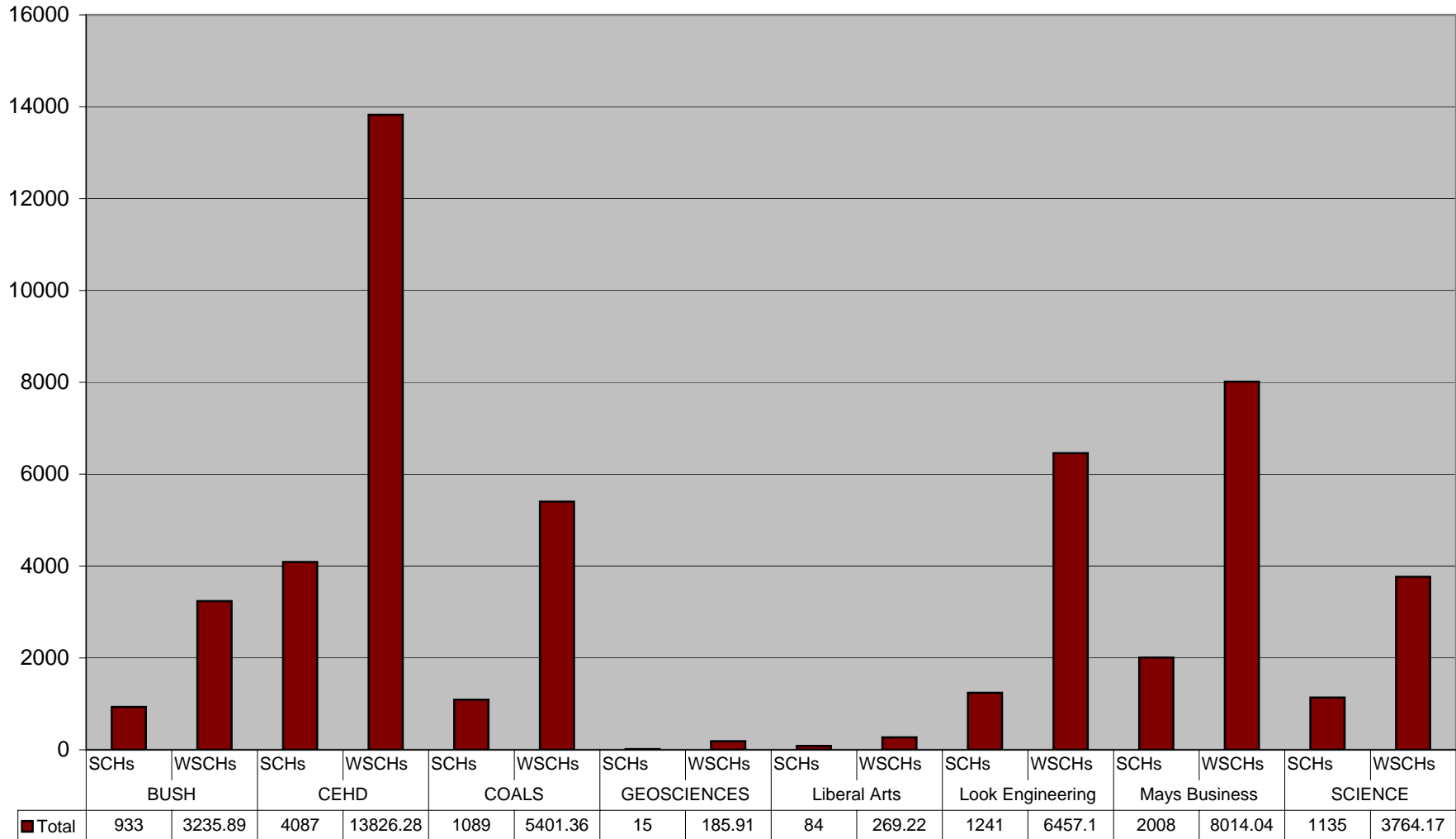
54

**Texas A&M Distance Education**  
 2006-2007 Academic Year  
*SCHs by College per Classification*



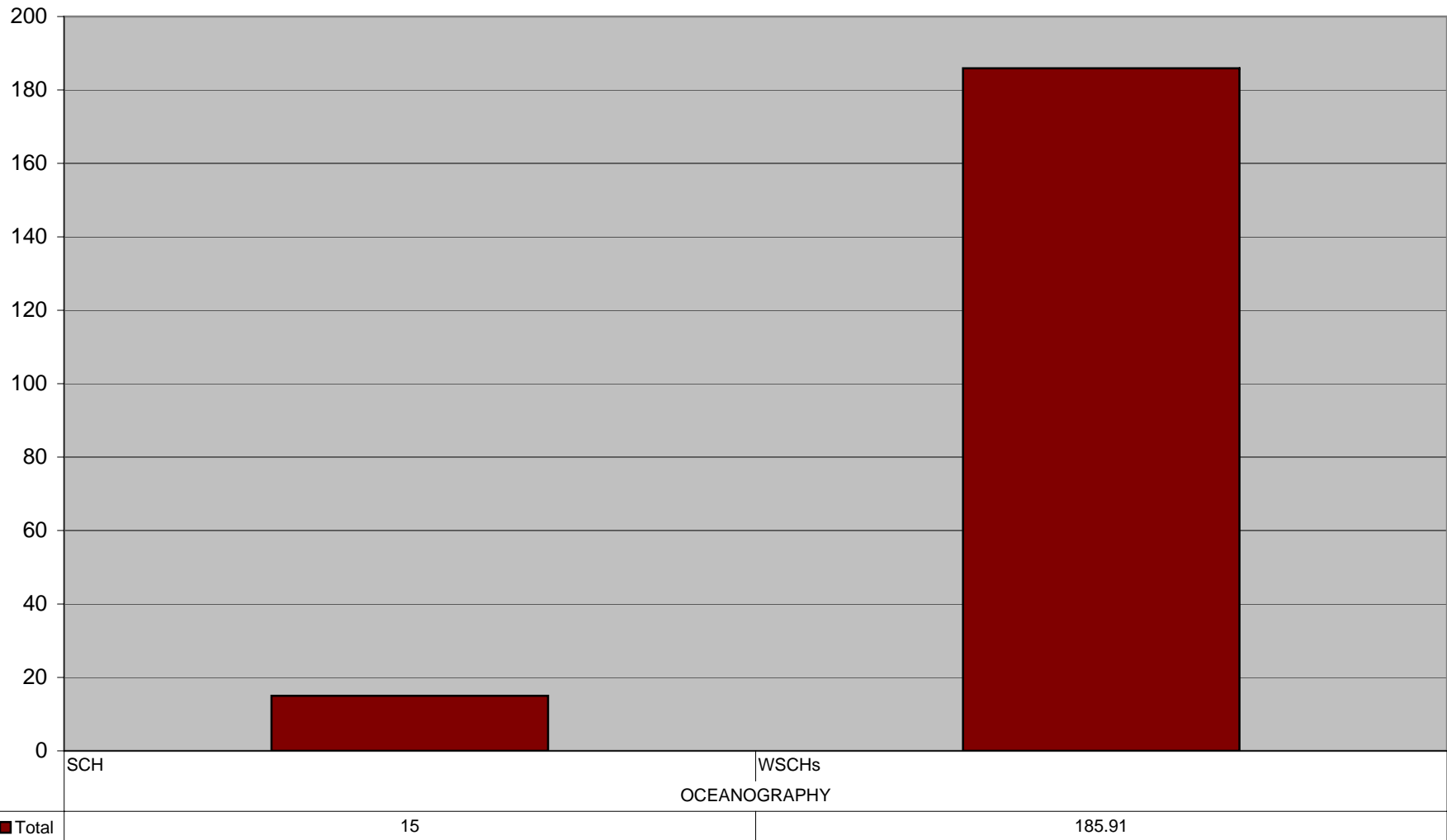
	G6	G7	G8	G9	U1	U2	U3	U4	U5
SCIENCE	193	782	130				3	27	
Mays Business		2008							
Look Engineering	246	890	39	60				6	
Liberal Arts		6	54			3	9	12	
GEOSCIENCES		9	6						
COALS	74	327	215	4	12	46	180	231	
CEHD	141	2422	657	3	72	36	27	684	45
BUSH	735	138	51					9	

**Texas A&M Distance Education**  
 Fall 2006 through Summer 2007  
*SCHs and Weighted SCHs\* by College*

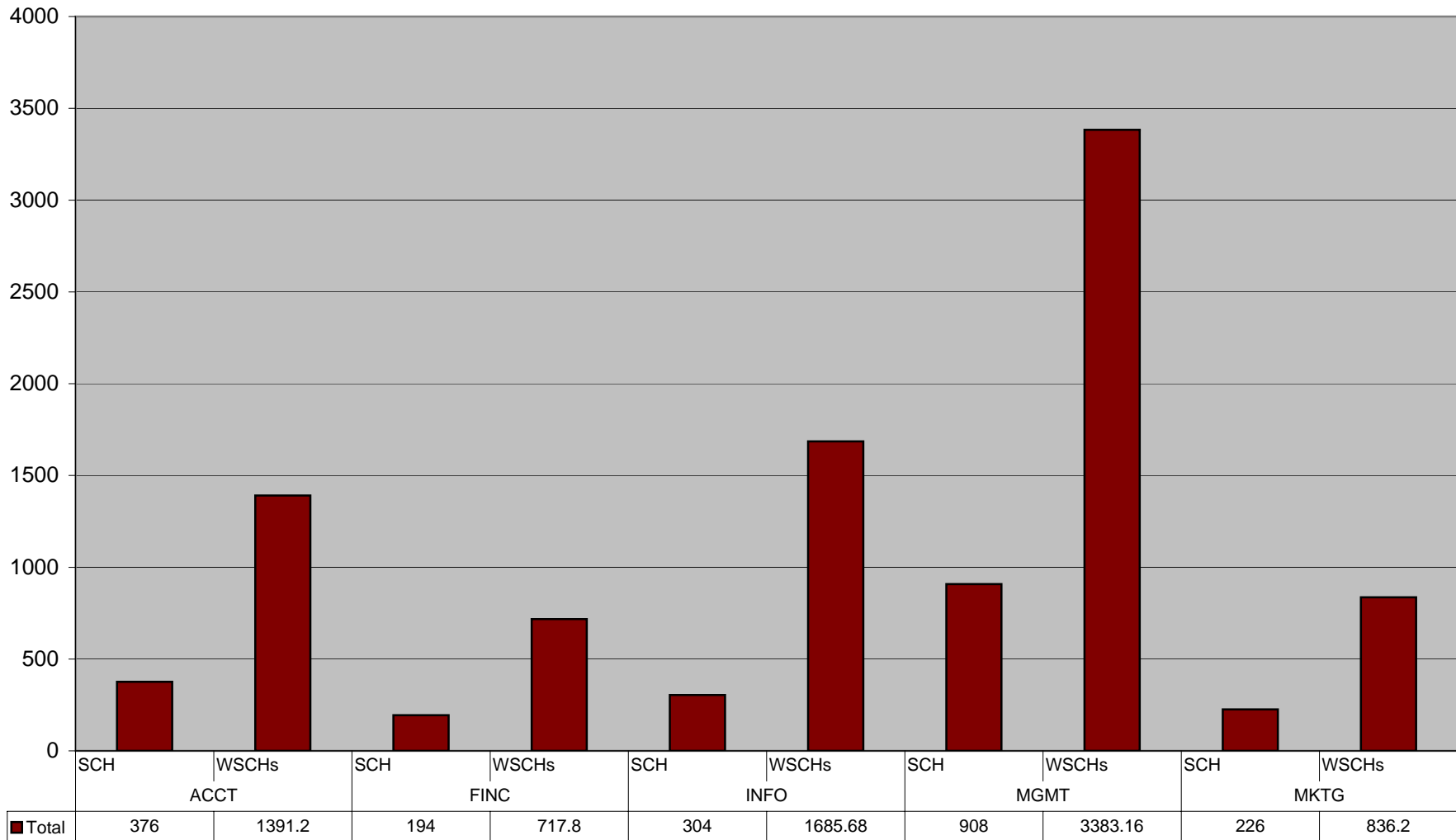


\*On this and subsequent pages, SCH figures include enrollments by all students regardless of residency. WSCH figures include only enrollments by in-state students.

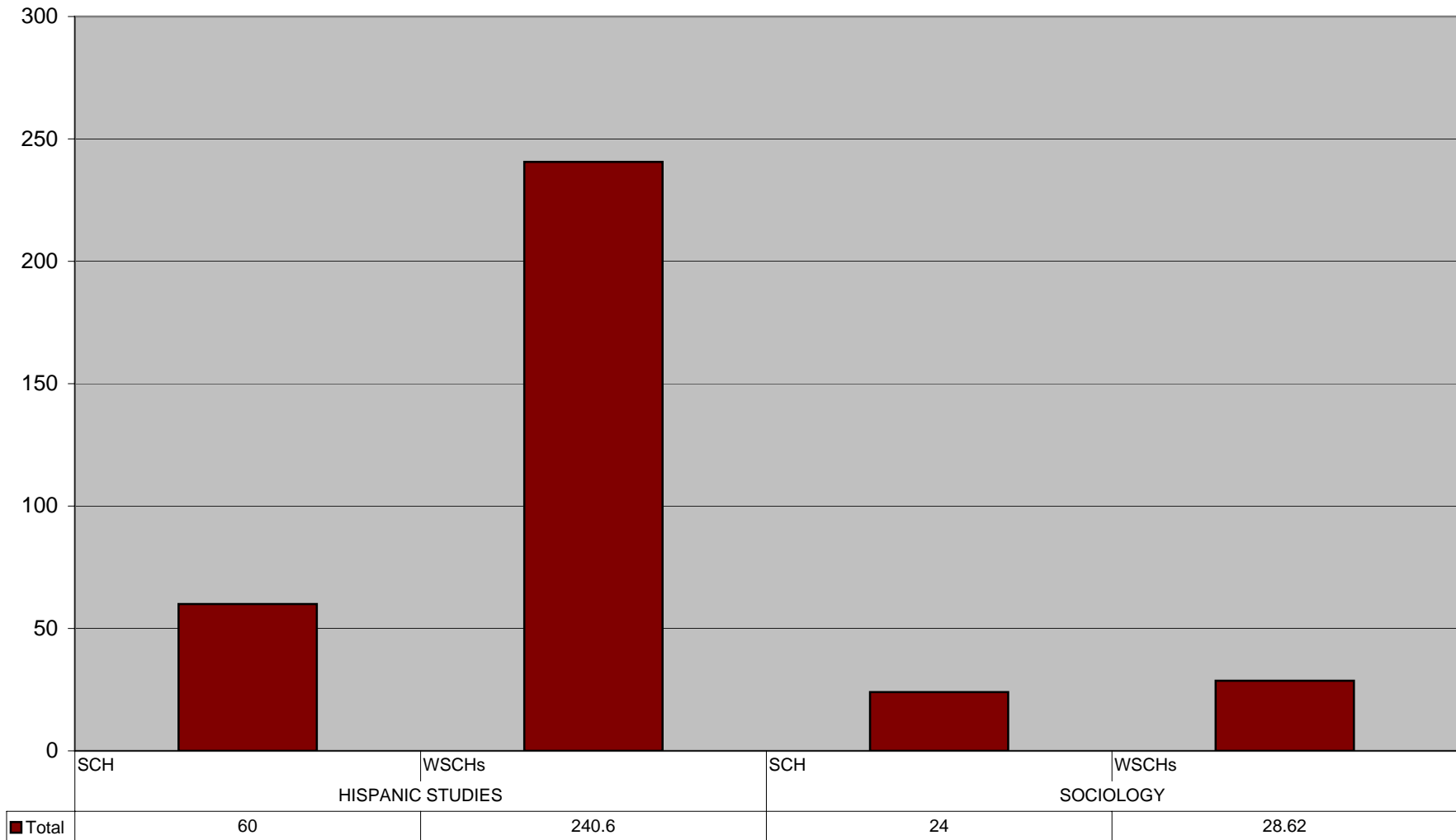
**Texas A&M Distance Education**  
 Geosciences  
*SCHs and Weighted SCHs by Department*



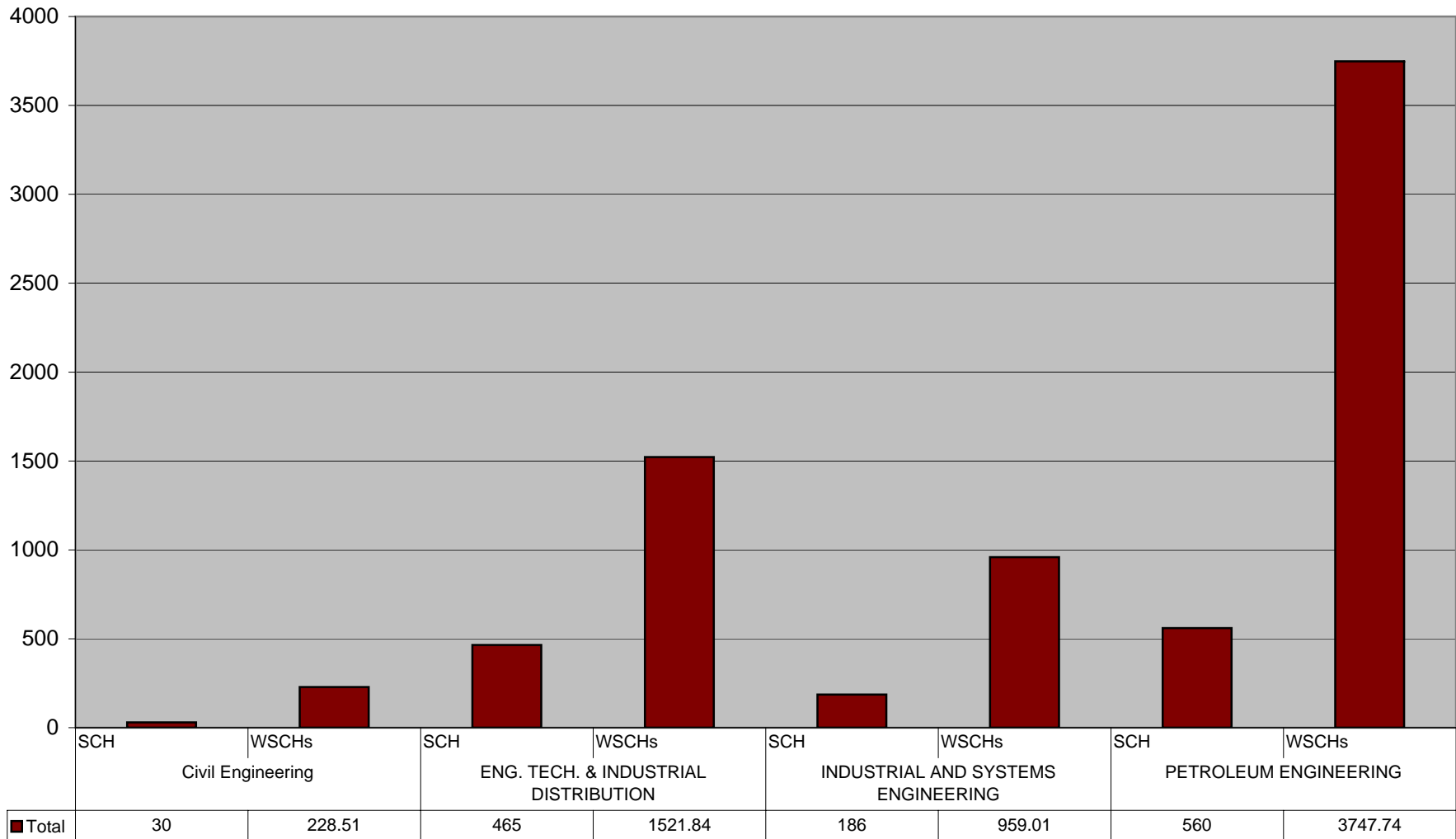
**Texas A&M Distance Education**  
Mays Business School  
*SCHs and Weighted SCHs by Department*



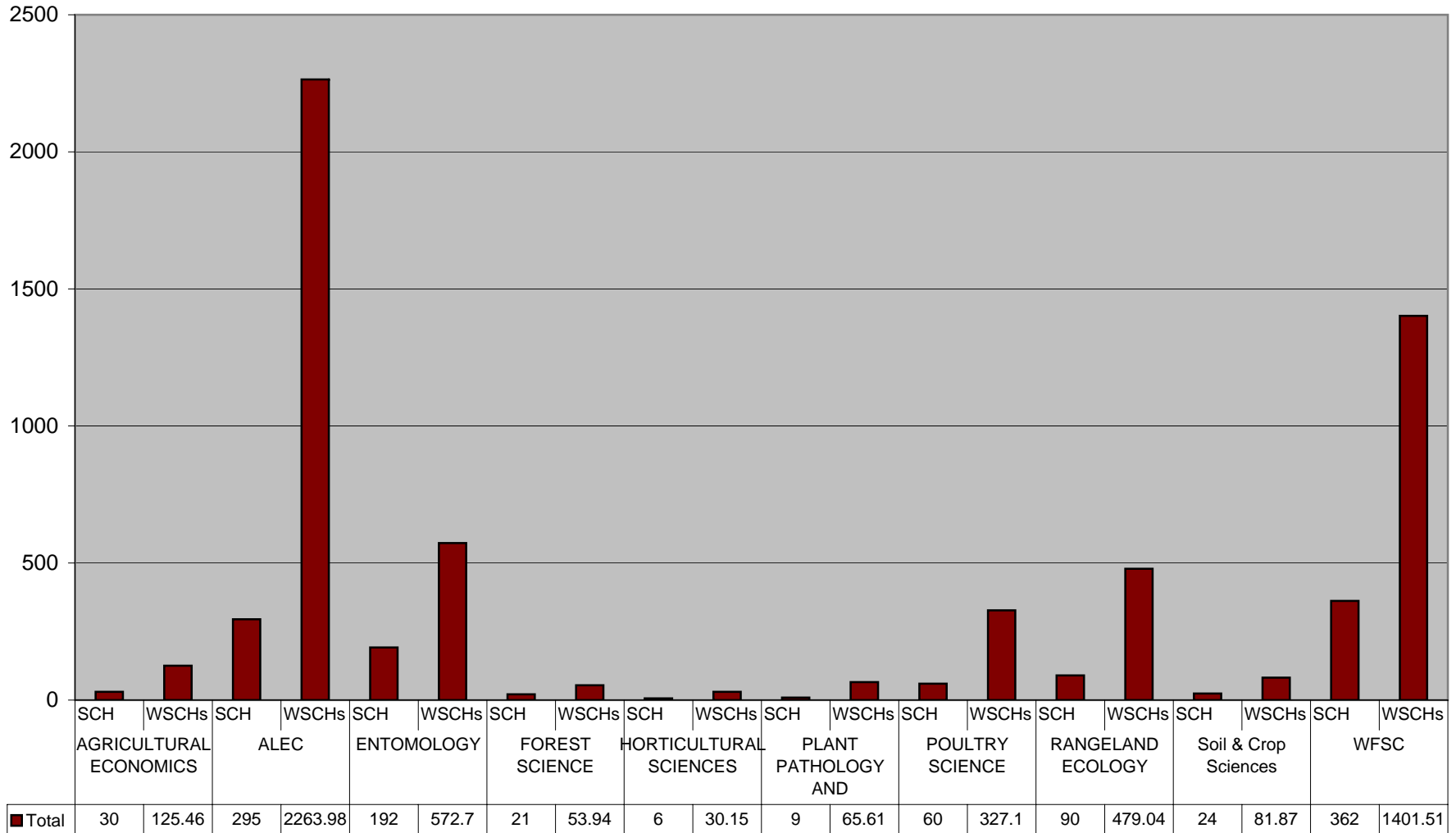
**Texas A&M Distance Education**  
 College of Liberal Arts  
*SCHs and Weighted SCHs by Department*



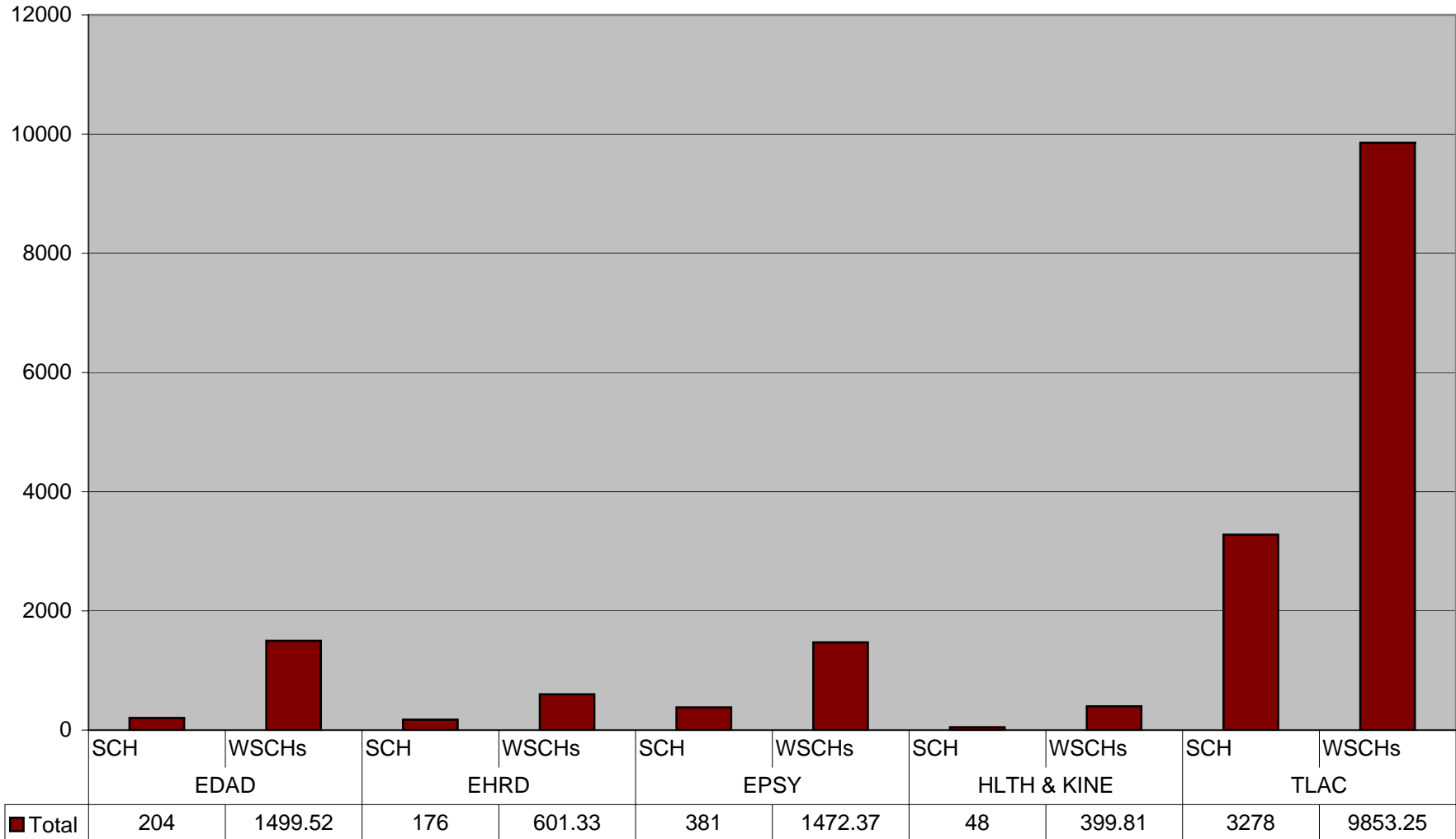
**Texas A&M Distance Education**  
 Look Engineering  
*SCHs and Weighted SCHs by Department*



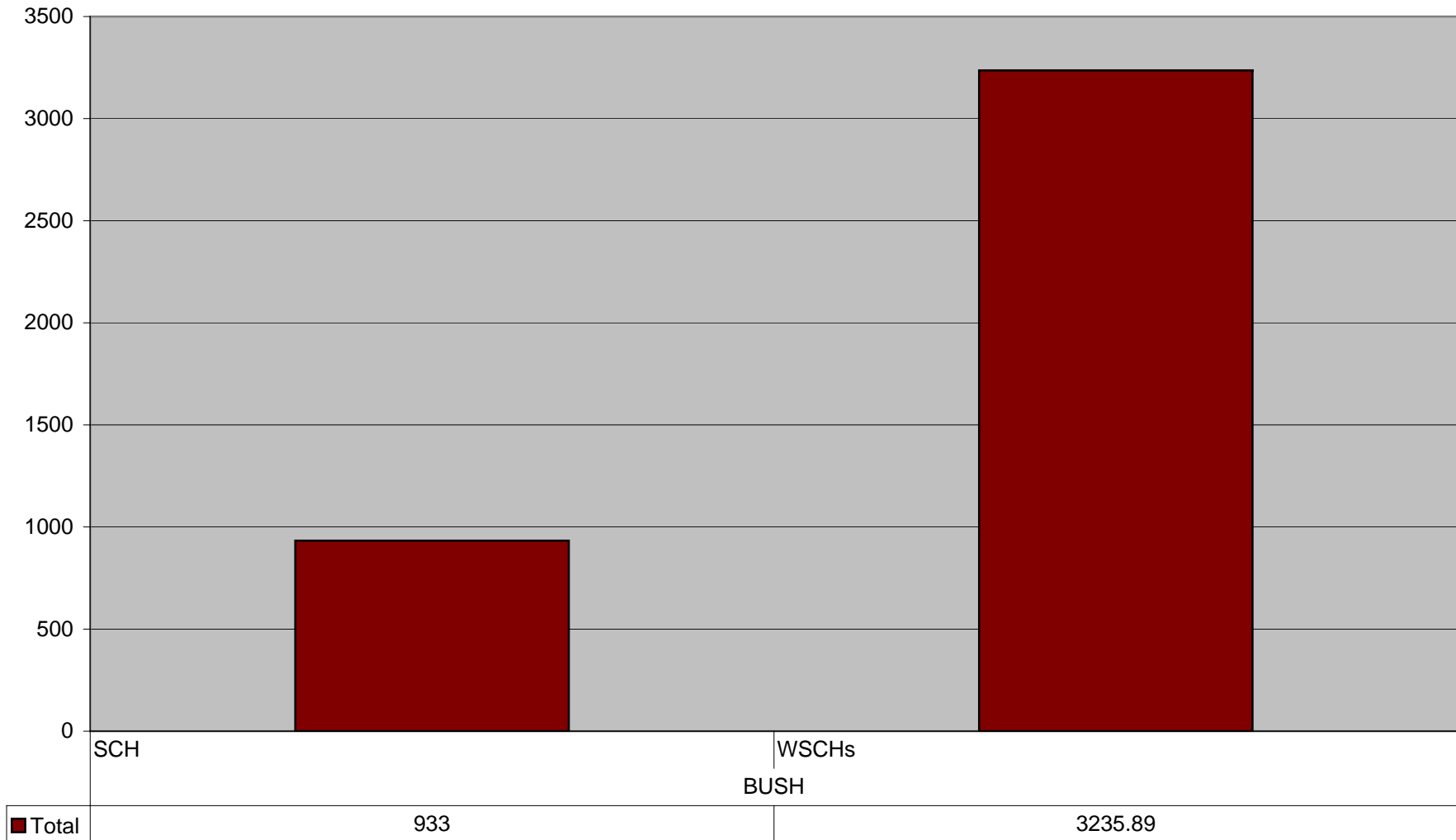
**Texas A&M Distance Education**  
 College of Agriculture and Life Sciences  
*SCHs and Weighted SCHs by Department*



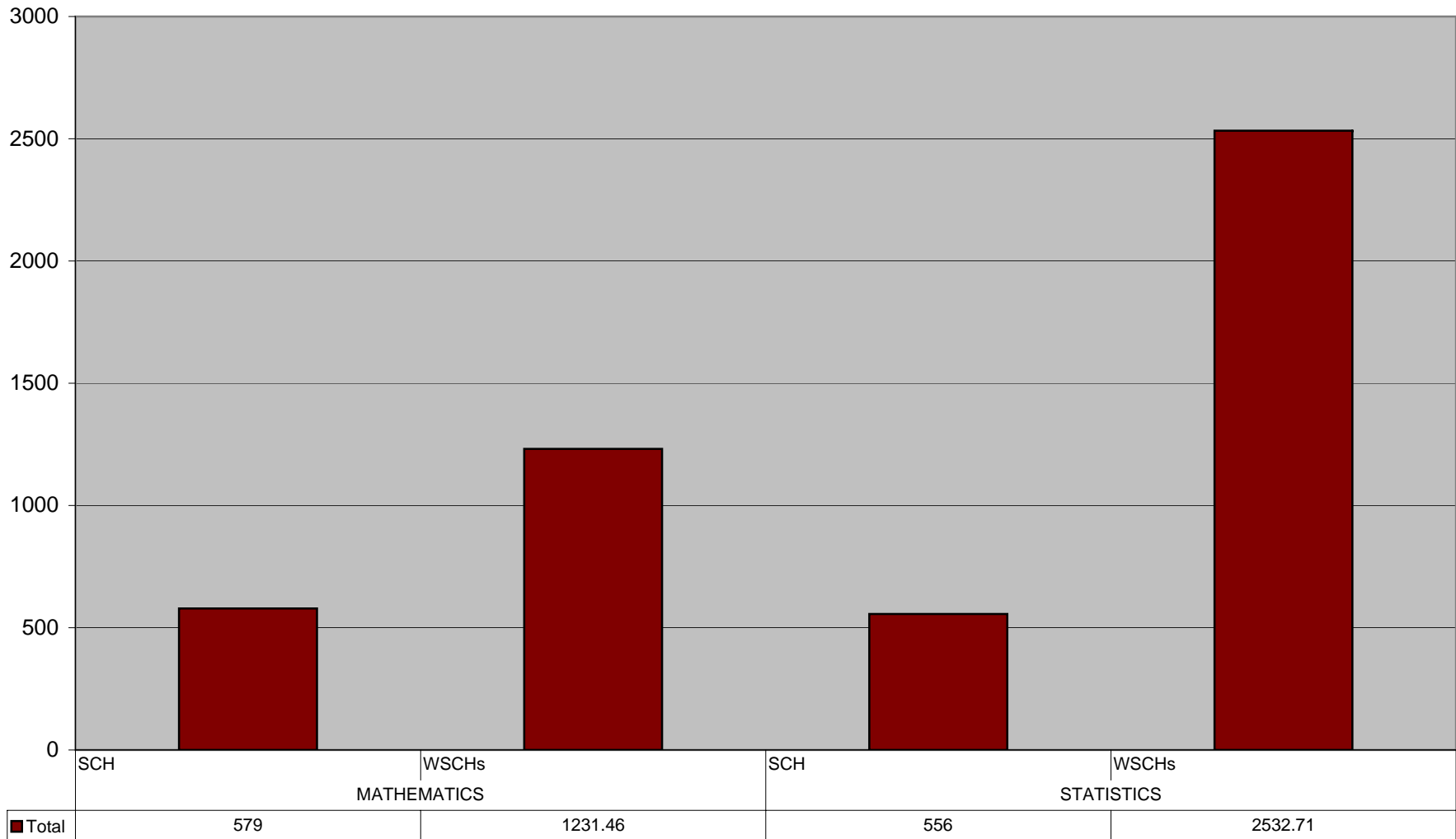
**Texas A&M Distance Education**  
 College of Education and Human Development  
*SCHs and Weighted SCHs by Department*



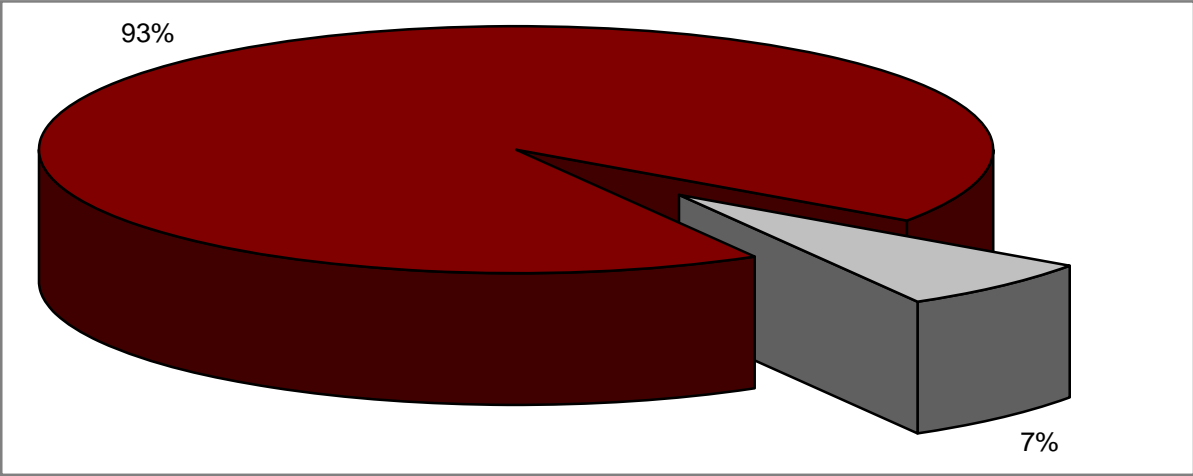
**Texas A&M Distance Education**  
 Bush School of Government  
*SCHs and Weighted SCHs by Department*



**Texas A&M Distance Education**  
 College of Science  
*SCHs and Weighted SCHs by Department*

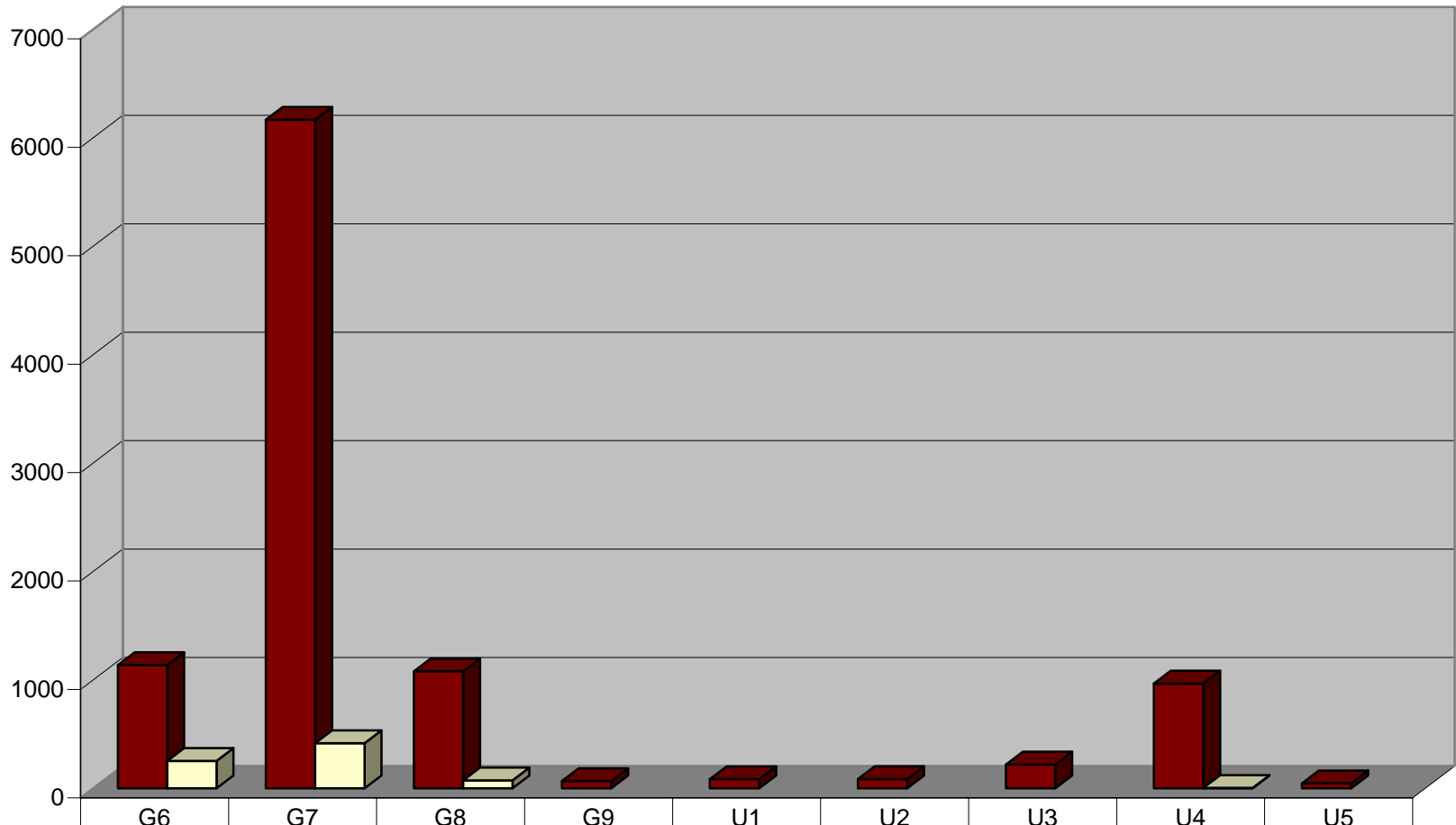


**Texas A&M Distance Education**  
2006-2007 Academic Year  
*Residency Status*



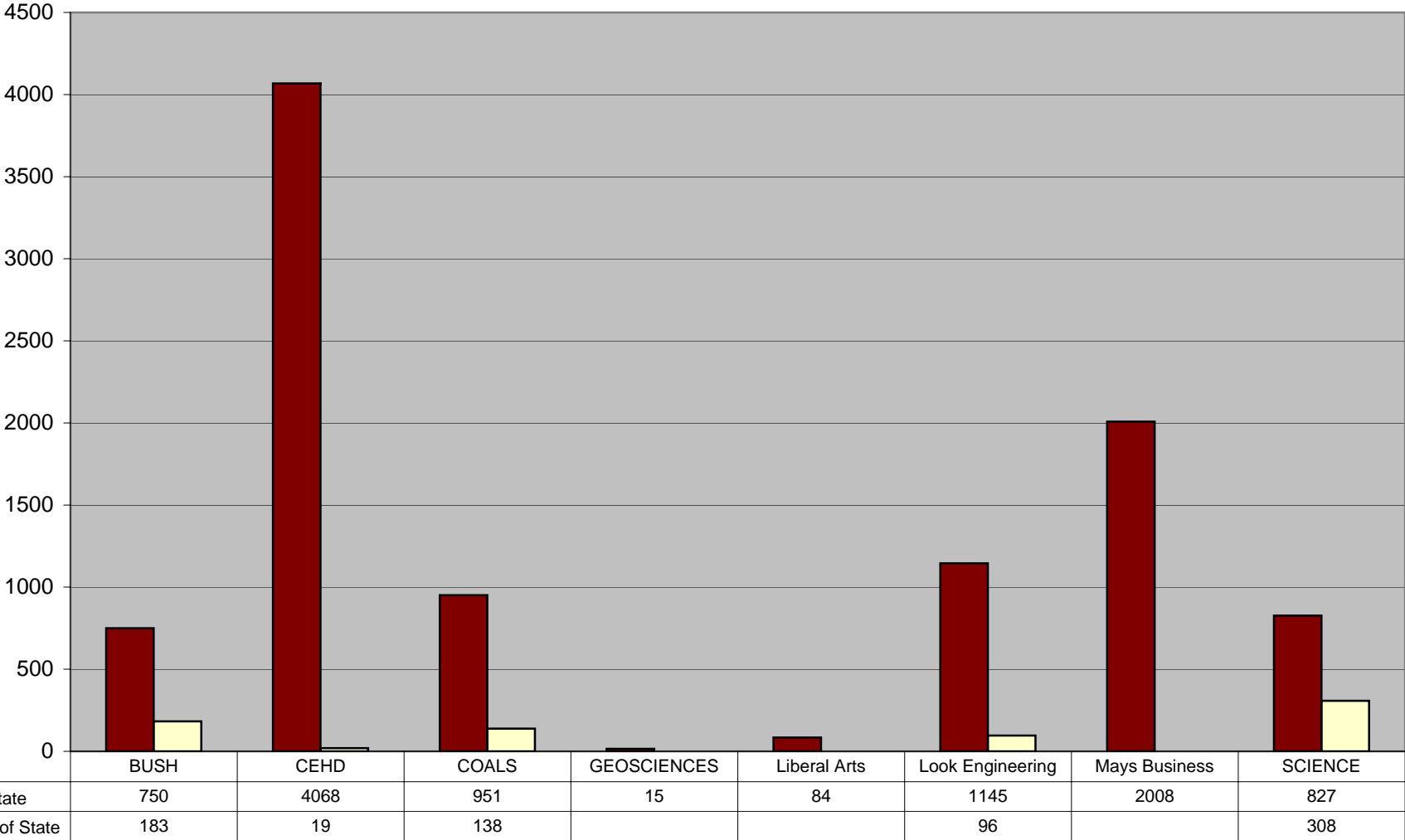
■ In State  
■ Out of State

**Texas A&M Distance Education**  
 Fall 2006 through Summer 2007  
*SCs by Residency per Classification*

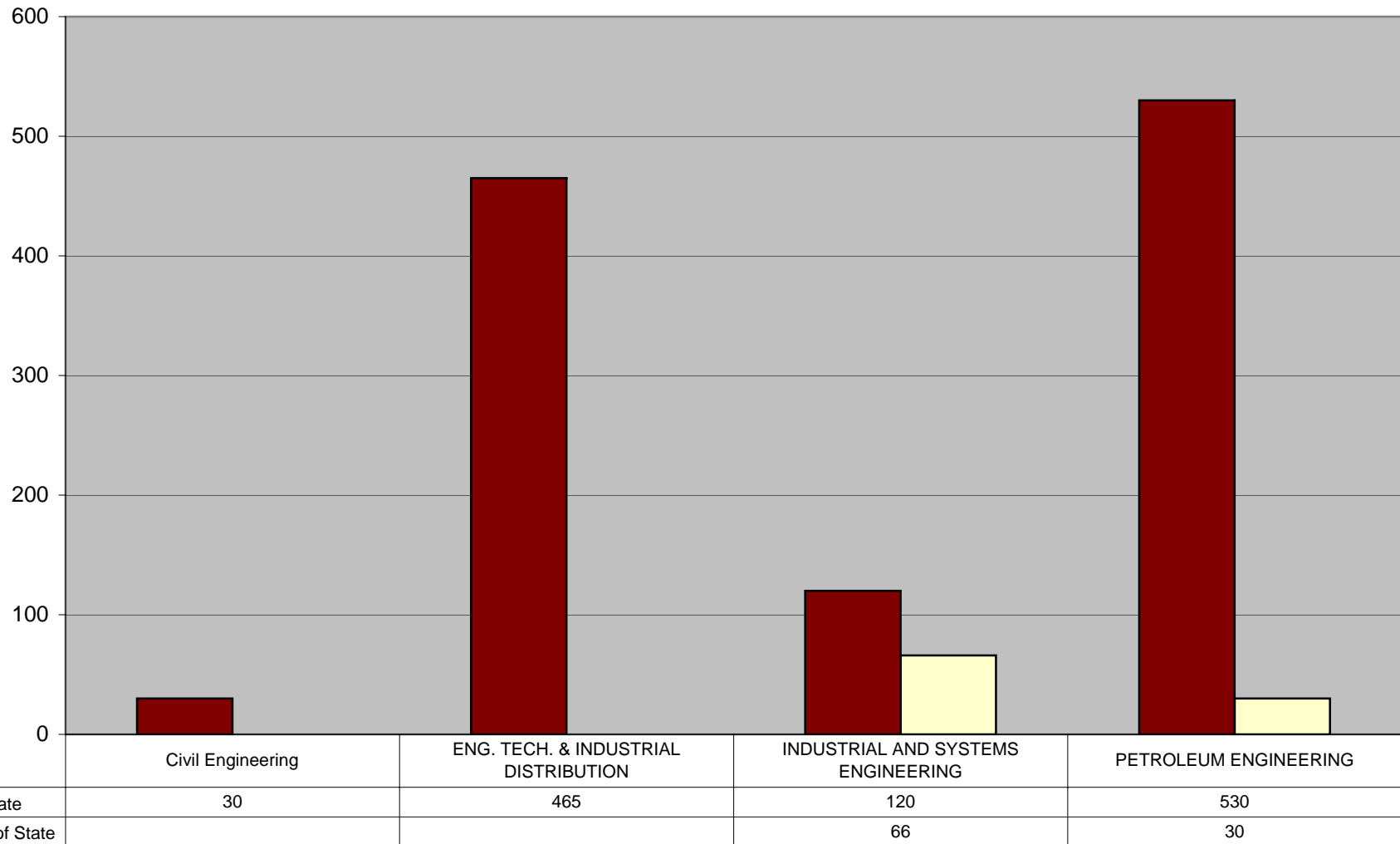


■ In State	1137	6166	1079	67	84	85	219	966	45
■ Out of State	252	416	73					3	

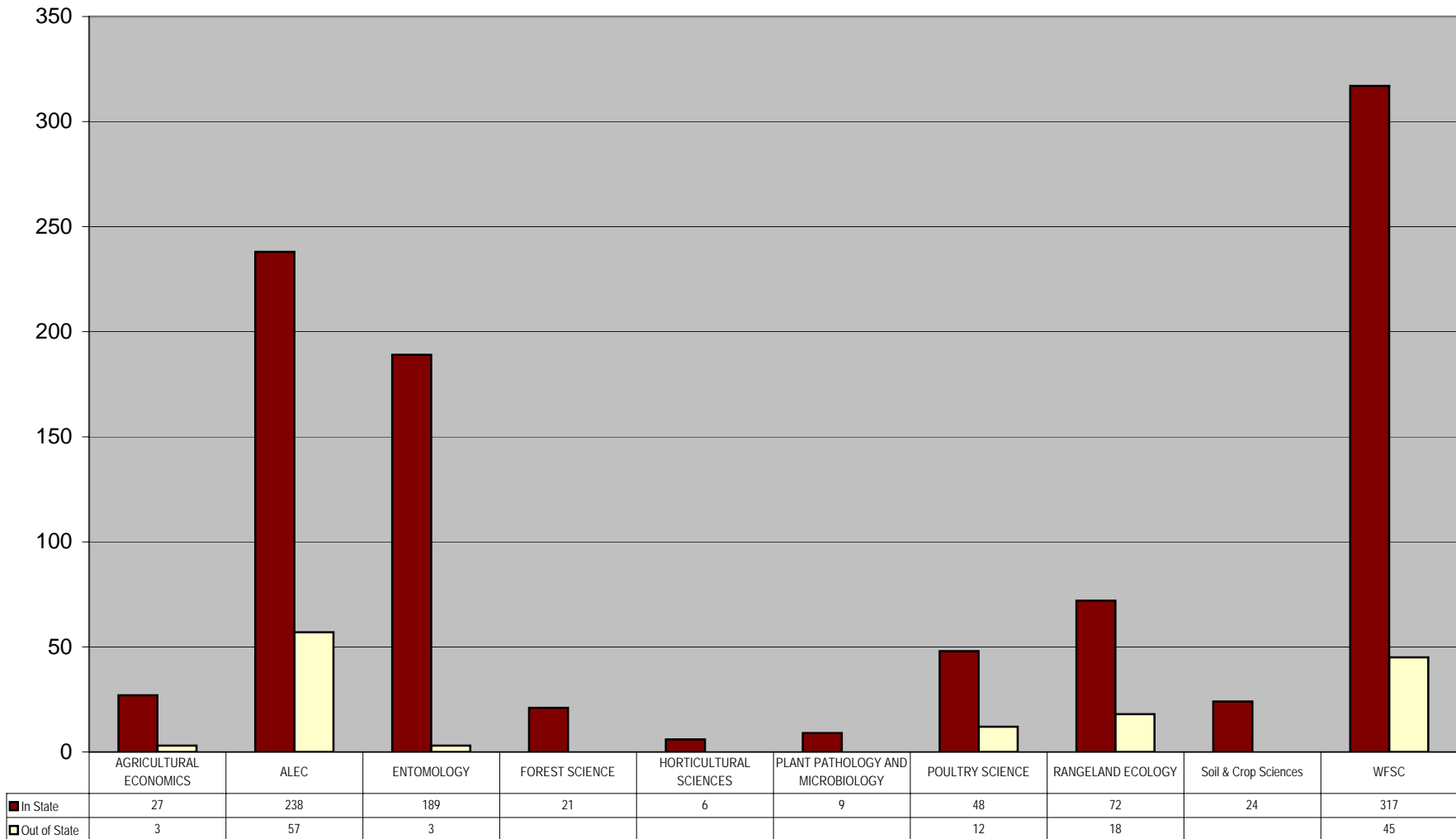
**Texas A&M Distance Education**  
 Fall 2006 through Summer 2007  
*SCHs by Residency per College*



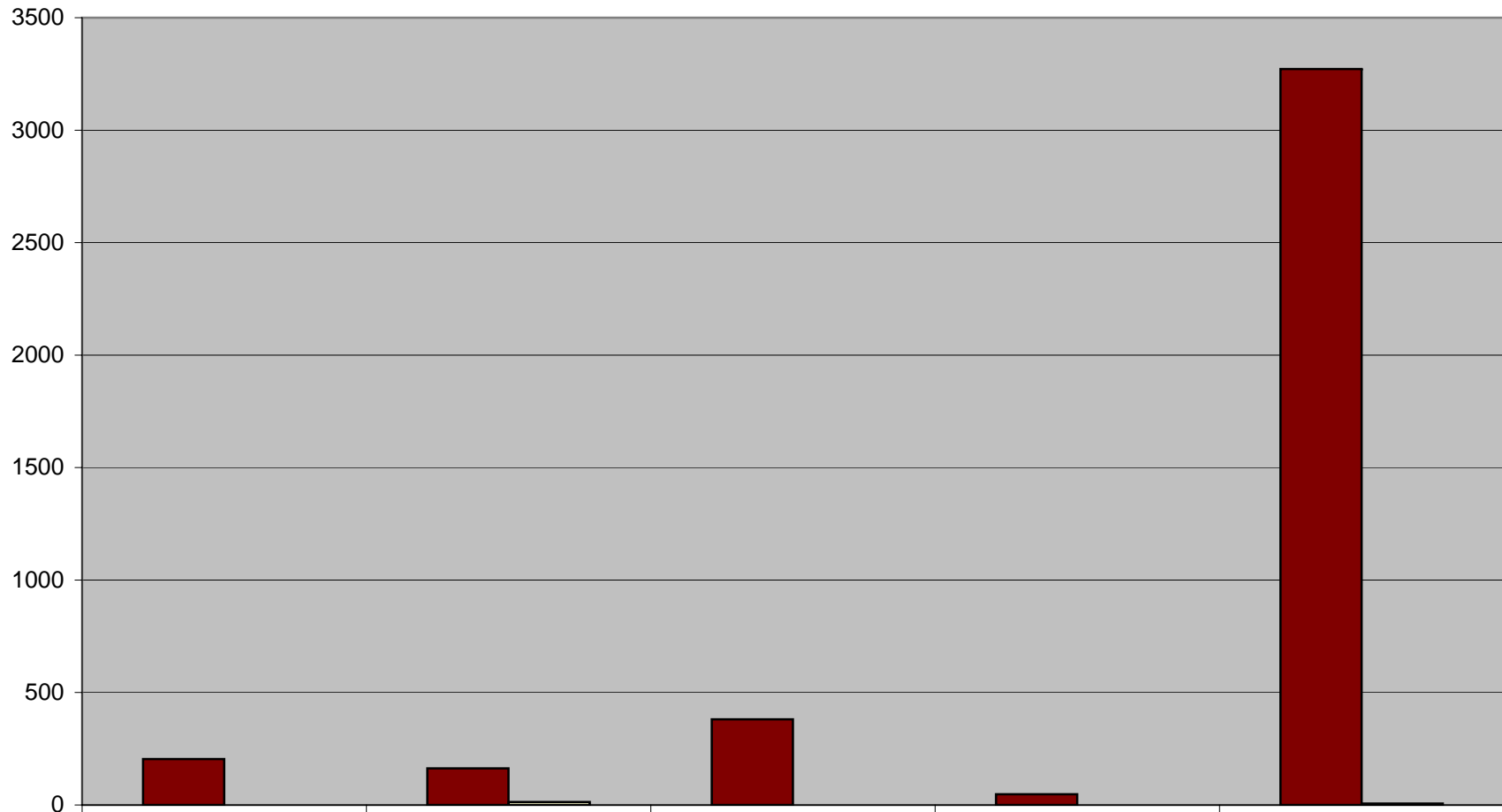
**Texas A&M Distance Education**  
 Look Engineering  
*SCHs by Residency per Department*



**Texas A&M Distance Education**  
 College of Agriculture and Life Sciences  
*SCHs by Residency per Department*

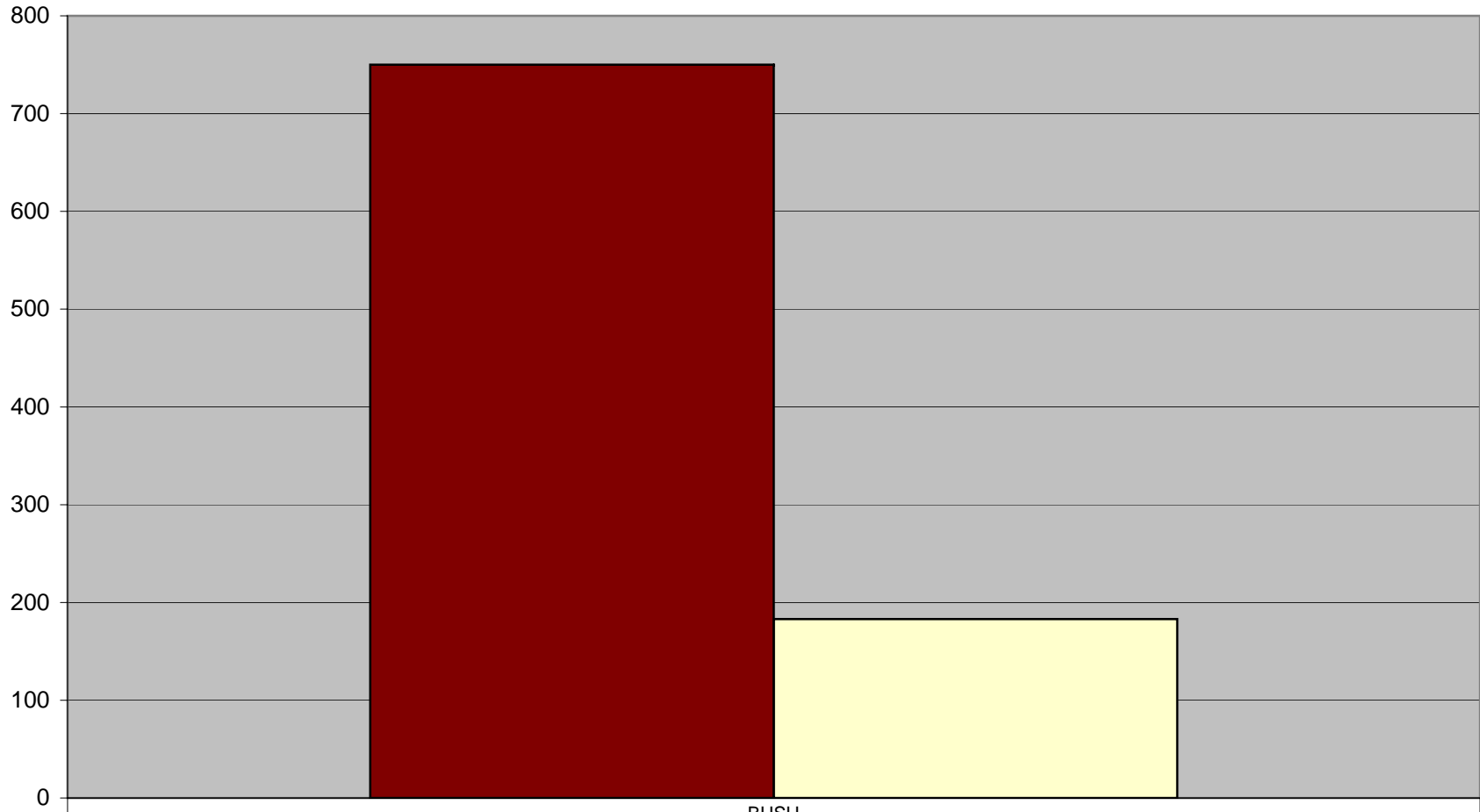


**Texas A&M Distance Education**  
 College of Education and Human Development  
*SCHs by Residency per Department*



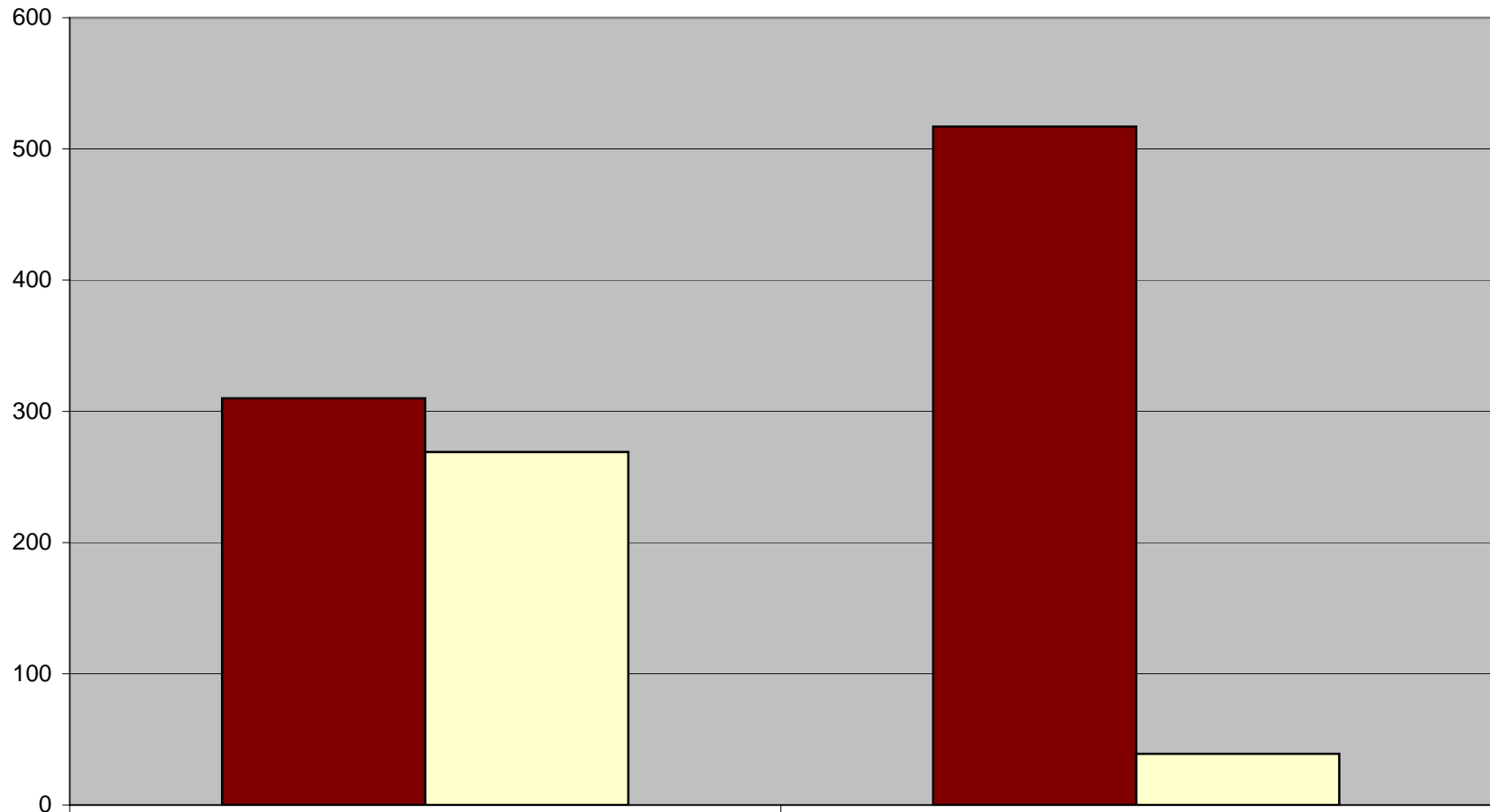
■ In State	204	163	381	48	3272
□ Out of State		13			6

**Texas A&M Distance Education**  
Bush School  
*SCHs by Residency per Department*



■ In State	750
■ Out of State	183

**Texas A&M Distance Education**  
 College of Science  
*SCHs by Residency per Department*



■ In State	310	517
■ Out of State	269	39